



Self-Propelled Telescopic Booms

S-40 / S-45TM

More of what
you need to
get the tough
jobs done.



Genie Australia
GENIE MEANS MORE THAN LIFTING

We give you features you won't find on other

Genie's S-40 and S-45 feature faster lift speeds, more powerful engine options, and low-profile chassis covers offering the industry more of what it needs to get the job done. Choose the Genie S-40 boom, with 14 m (46 ft) of working height, or the S-45, with an additional 1.52 m (5 ft) articulating jib boom. Customise your boom with many option packages.



S-45 Out-and-Up Articulating Jib Boom

This special option gives you an additional 1.52 m (5 ft) of horizontal reach for a total of 11.2 m (36 ft 8 in). The S-45 jib boom gives you flexibility too – 135° of working range. You not only access 75° above horizontal, but you can get to 60° below horizontal.



Standard Features

Proportional Controls

Allow smooth operation and easy positioning.

160° Hydraulic Platform Rotator

Gives you precise placement without repositioning the boom.

Easily Accessible Components

The swing-out engine tray and easy-to-understand electrical system simplify routine maintenance.

Positive Traction Drive

Full-time positive traction system on both 4x2 and 4x4 models.

Drive Enable System

Informs operator when the drive and steer functions will move opposite the controller movements.

Low-Profile Chassis Covers

Provide high visibility for the operator while unit is in stowed position.

Platform Controls

Large, simple to use controls for easy operation.

Transportability

The S-40 and S-45 are designed to load and unload easily from transport vehicles.

Increased Lift Speed

The capability to operate multiple functions simultaneously results in maximum lift speed. The S-40 elevates from the ground to full height in just 40 seconds.

er stick booms.

Easily customised to meet your needs:

Engine Options

Ford LRG 425 EFI
Gas/LPG 61 kw (82 hp)
Deutz Diesel 37 kw (50 hp)
Perkins Diesel 45 kw (60 hp)

Platform Options

Standard: Steel 1.83 m (6 ft)
Optional: Steel 2.44 m (8 ft)

Drive Options

4x2 – two wheel drive
gradeability up to 30%
4x4 – four wheel drive
gradeability up to 40%

Axle Options

Oscillating axle
Non-oscillating axle

Tyre Options

Rough terrain, foam filled.
Rough terrain non-marking (4x4 only)
High floatation turf tyre (4x4 only)

Terrain Tracking Active Oscillation System

This revolutionary system automatically senses the terrain and adjusts the axle position based on ground conditions. The oscillating axle allows you to drive on uneven ground with the turntable rotated up to 90°. It provides an amazingly smooth ride even when the platform is raised.



Loeering Tracking Systems

Loeering offers two specially designed tracking systems for the S-40 and S-45. The tracks, available in both rugged steel and soft-bottom urethane, along with a wheel and idler system, give the lifts more traction and floatation in adverse conditions. The tracks attach quickly and easily with a customized intallation tool. After initial intallation, the drive-on design allows reinstallation in less than 30 minutes. The tracks are fully adjustable and rebuildable, making them the ultimate value.



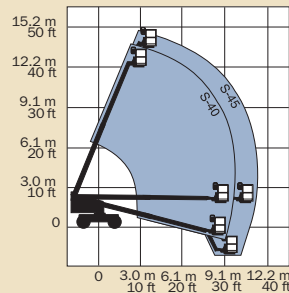
S-40 / S-45

Standard Features

- S-40 has 14 m (46 ft) working height
- S-45 has 15.5 m (51 ft) working height
- S-40 has 9.7 m (31 ft 8 in) horizontal reach
- S-45 has 11.2 m (36 ft 8 in) horizontal reach
- 227 kg (500 lb) lift capacity
- Oscillating axle system on 4x4 models
- Dual fuel (Gas/LPG) or diesel engine options
- Fully proportional platform controls with ramp up/down feature
- Hydraulic platform rotation
- 360° continuous turntable rotation
- 12V DC auxiliary power
- Fuel select switch on platform and ground control panels (Gas/LPG models)
- Closed-loop hydrostatic drive

- Hydraulic oil cooler
- Positive traction drive
- Drive enable system
- Self-levelling platform
- Locking turntable covers
- Anti-restart engine protection
- Auto engine fault shutdown
- AC wiring to platform
- Wire braided hose
- Tilt alarm
- Horn
- Hour meter
- Foam-filled tyres

Range of Motion

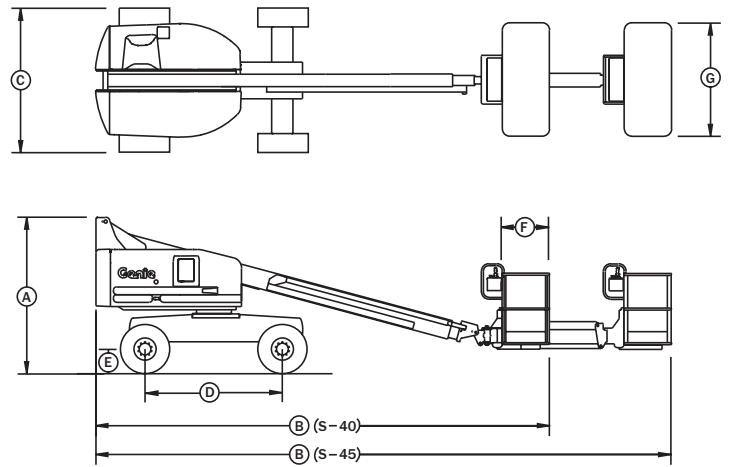


Options and Accessories

- Alarm package
- Cold start packages
- 2700 or 5000 watt AC generator
- 2.44 m (8 ft) steel platform
- Platform swing gate
- Air line to platform
- Platform rail pinch guard
- Platform work lights
- Lockable platform control box cover
- Tool tray
- Fluorescent tube caddy
- Hostile environment packages
- Additional LPG tank
- GS/LPS rating for Ford engine powered machines
- Driving lights
- Weld lead to platform
- Spark arrester (Ford and Deutz)
- Scrubber/spark arrester (Deutz)

Standards Compliance

- ANSI/SIA A92.5
- CAN3-B354.4-M82
- CE
- AS 1418.10



Specifications

Model	S-40		S-45	
	Metric	US	Metric	US
Working height max*	14 m	46 ft	15.5 m	51 ft
Platform height max	12.2 m	40 ft	13.7 m	45 ft
(A) Height - stowed	2.5 m	8 ft 2 in	2.5 m	8 ft 2 in
(B) Length - stowed	7.4 m	24 ft 3 in	8.5 m	27 ft 10 in
(C) Width	2.3 m	7 ft 6 in	2.3 m	7 ft 6 in
(D) Wheelbase	2.2 m	7 ft 3 in	2.2 m	7 ft 3 in
(E) Ground clearance	32 cm	12½ in	32 cm	12½ in
(F) Platform length: 6 ft	76 cm	30 in	76 cm	30 in
8 ft	91 cm	36 in	91 cm	36 in
(G) Platform width:	1.83 m	72 in	1.83 m	72 in
	2.44 m	96 in	2.44 m	96 in
Horizontal reach max	9.7 m	31 ft 8 in	11.2 m	36 ft 8 in
Lift capacity	227 kg	500 lb	227 kg	500 lb
Turning radius - outside	4.78 m	15 ft 8 in	4.78 m	15 ft 8 in
Turning radius - inside	2 m	6 ft 8 in	2 m	6 ft 8 in
Turntable rotation	360° continuous		360° continuous	
Turntable tailswing	86 cm	34 in	86 cm	34 in
Power source	Ford LRG 425 EFI Gas/LPG 861 kw (2hp) Deutz Diesel 37 kw (50 hp) Perkins Diesel 45 kw (60 hp)			
Platform rotation	160°		160°	
Auxiliary power unit	12V DC		12V DC	
Tyres - RT Lug	12-16.5 NHS		12-16.5 NHS	
Tyres - Ribbed (4x2 front)	12.5 L-16 SL		12.5 L-16 SL	
Hydraulic tank capacity	170 litres	45 gal	170 litres	45 gal
Fuel tank capacity	125 litres	33 gal	125 litres	33 gal
Weight**	5,582 kg	12,306 lb	6,709 kg	14,790 lb
S-40/S-45	4x2		4x4	
Drive speed, stowed	6.1 kph	3.8 mph	4.5 kph	2.8 mph
Deutz Diesel models				
Drive speed, raised or extended	1.1 kph	0.68 mph	1.1 kph	0.68 mph
Gradeability - stowed	45%		40%	

* The working height adds 2 m to platform height. Imperial adds 6 ft to platform height
 ** Weight will vary depending on options and/or country standards.

Distributed By:

Genie Industries™

GENIE AUSTRALIA

591 Boundary Road, Darra Qld 4076
 PO Box 394, Richlands Qld 4077
 Telephone **07 3375 1660**
 Toll Free in Australia **1800 331 660**
 Fax 07 3375 1002
<http://www.genieindustries.com>

GENIE UNITED STATES

18340 NE 76th Street, P.O. Box 97030
 Redmond, Washington 98073-9730
 Telephone **(425) 881-1800**
 Toll Free in USA/Canada **800-536-1800**
 Fax (425) 883-3475
<http://www.genieindustries.com>

For further information, please contact your local distributor or the Genie sales office listed. Continuous improvement of our products is a Genie policy. Product specifications are subject to change without notice or obligation. The photographs and drawings in this brochure are for illustrative purposes only. Refer to the appropriate Genie S-40 and S-45 Operator's Manual for instructions on the proper use of this equipment. Failure to follow the appropriate Operator's Manual when using a Genie S-40 or S-45, or to otherwise act irresponsibly, may result in serious injury or death. Copyright © 2001 by Genie Industries. "Genie" and "S" are Registered Trademarks of Genie Industries in the USA and many other countries. Genie is a Terex company. Loegering is a registered trade mark of Loegering. Genie is the owner of US Patent: 5,447,331 and Patents pending. S40 5K 0302F. Part No. 65015. GEN0328. Printed Jan 2004.